

# FOSS FIELDS ADDITION

# \$181,550

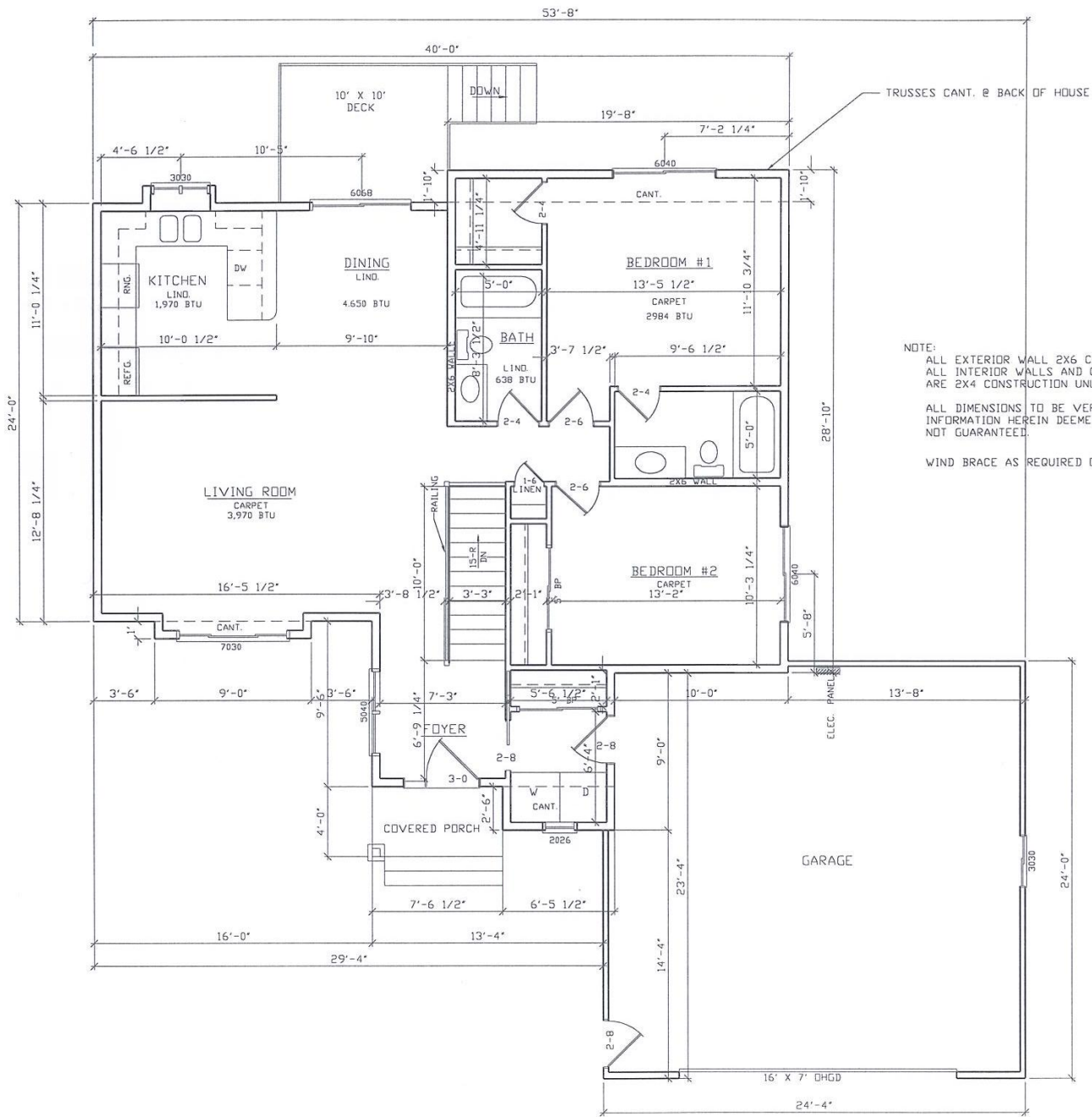


**Ranch plan w/ 1184 square feet finished**  
**2 bedrooms, 2 bathrooms**  
**Main floor laundry**  
**24' x 24' garage**  
**Includes \$40,000 lot cost**  
**(3 stall garage: \$ 189,985 total cost)**



Phone: 605.335.8926

[www.c-lemme.com](http://www.c-lemme.com)



NOTE:  
 ALL EXTERIOR WALL 2X6 CONSTRUCTION.  
 ALL INTERIOR WALLS AND GARAGE WALLS  
 ARE 2X4 CONSTRUCTION UNLESS NOTED.  
 ALL DIMENSIONS TO BE VERIFIED BY CUSTOMER  
 INFORMATION HEREIN DEEMED RELIABLE BUT  
 NOT GUARANTEED.  
 WIND BRACE AS REQUIRED OR AS ENGINEERED.

<b>Living Room</b>	<b>20' x 12'8"</b>
<b>Dining Room</b>	<b>11' x 9'10"</b>
<b>Kitchen</b>	<b>11' x 10'</b>
<b>Master Bedroom</b>	<b>13'6" x 12'</b>
<b>2nd Bedroom</b>	<b>13' x 10'3"</b>
<b>Bathrooms</b>	<b>2 Full</b>
<b>Garage</b>	<b>24' X 24'</b>

**School**  
 Fred Assam Elementary (Brandon)  
 Brandon Middle School  
 Brandon High School

**Constructed By**  
**C-Lemme Companies LLC**